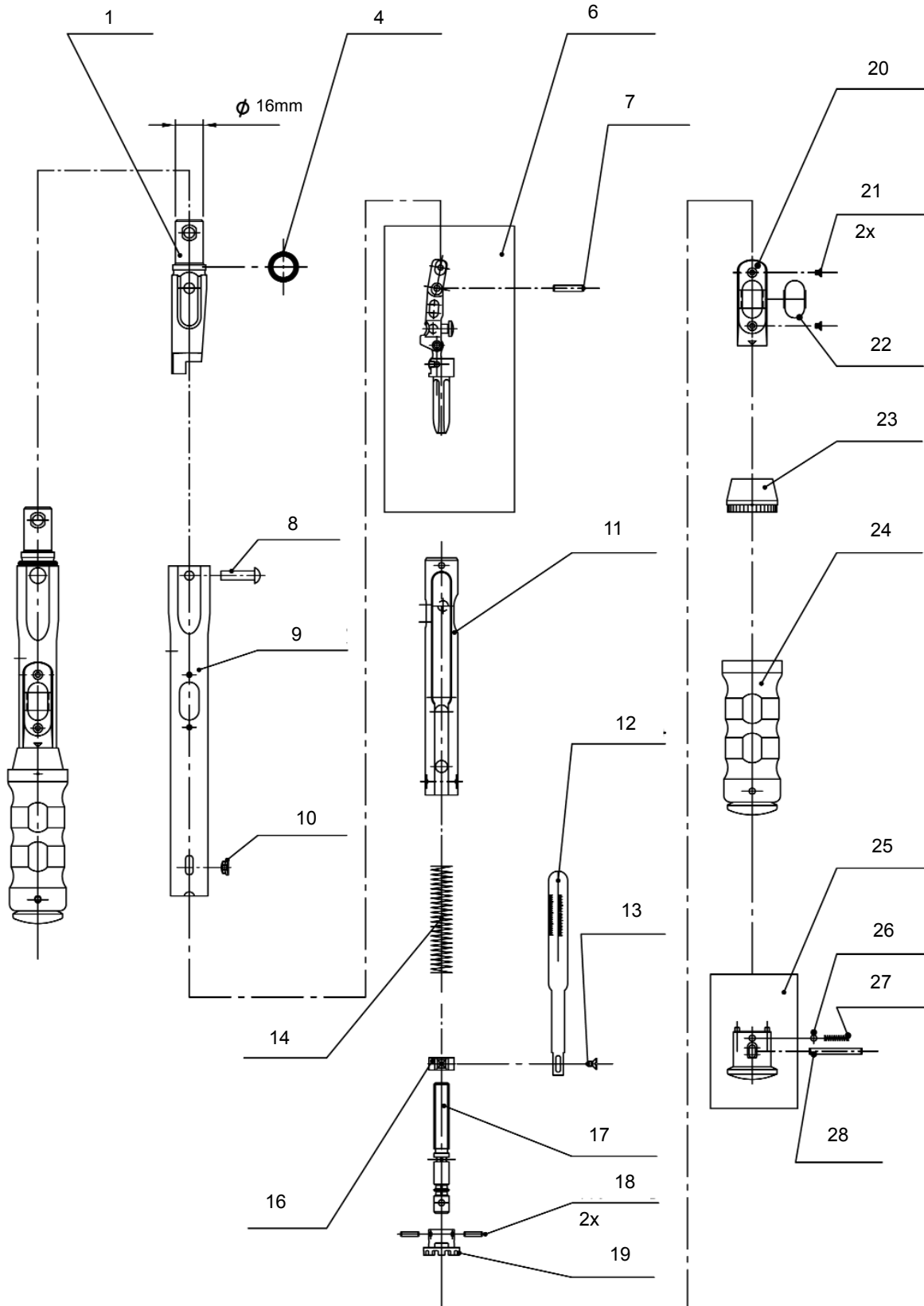


Titan 250i-S Click Wrench (Adjustable)

Rev. 1.0



Titan 250i-S Click Wrench (Adjustable)

Ref #	Part #	Quantity	Description
1	28-1195689	1	Lever 16mm Spigot End
4	28-1197436	1	Seal Ring DIN 3770 15x3.55
6	28-1196448	1	Final Lever 4550-20/12
7	28-1183192	1	Cylindric pin 4m6x21.5
8	28-1197819	1	Rivet Pin
9	28-1786172	1	280021 Body Tube
10	28-1203762	1	Locking Plug 4550-20
11	28-1201557	1	Spring Housing 4550-00
12	28-1544764	1	Scale Sheet
13	28-1200291	1	Scale Screw M3x3.8
14	28-1181955	1	Compression Spring 4550-00
16	28-1196073	1	Nut M10x1 complete
17	28-1201565	1	Spindle Screw M10x1
18	28-1184075	2	Cylindric pin 3M6x18.8
19	28-1201514	1	Gear
20	28-1535153	1	Scale Frame black
21	21-1197959	2	Flat-head scrwe M3x4.5
22	28-1198378	1	Plastic window
23	28-1198009	1	Scale Ring Black
24	28-1195379	1	Handle Black 4550-00
25	28-1446487	1	Lock knob black
26	28-1180266	1	Ball 4mm V
27	28-1182749	1	Compression spring 0.4x3.7x8
28	28-1183087	1	Cylindric pin 4m6x36